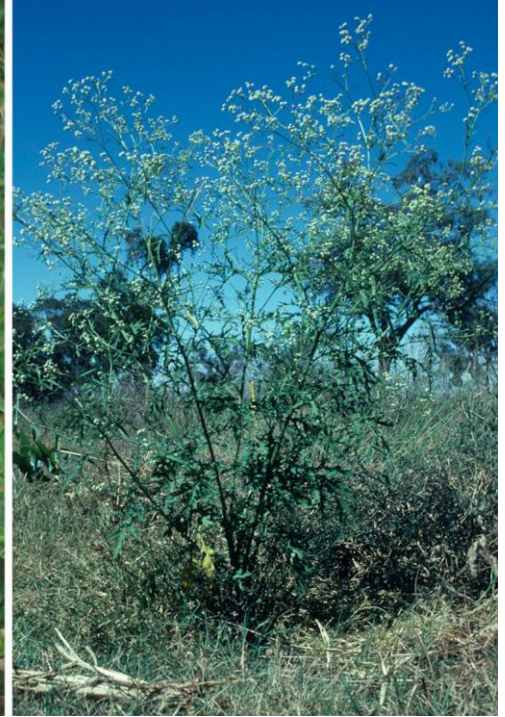


# Seen this plant? Parthenium weed

*Parthenium hysterophorus*



## How does this weed affect us?

Parthenium weed invades pastures and crops. It causes severe human health problems including:

- respiratory problems
- severe dermatitis.

It can also cause health problems in livestock.

## Parthenium weed:

- is unpalatable to livestock
- outcompetes pastures
- can taint meat or milk
- reduces crop yields
- contaminates grain
- is a host plant for crop viruses.

**Seen it? Call us:**

**Upper Hunter Weeds Authority** [0408 683 490](tel:0408683490)

**NSW DPI Biosecurity Helpline** [1800 680 244](tel:1800680244)

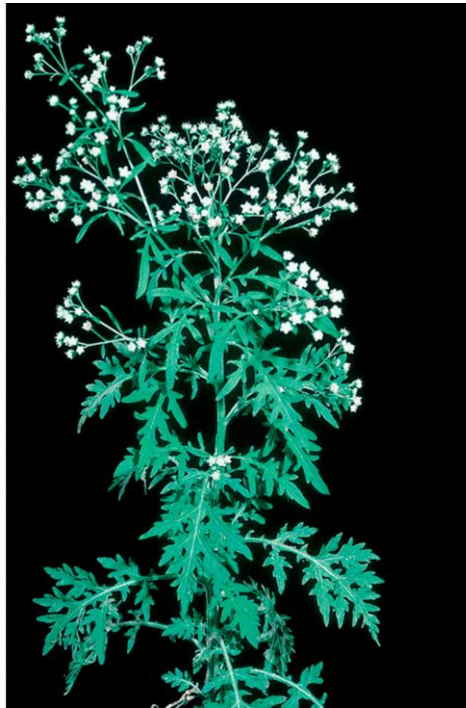
**Help protect our farms and grazing lands.**

**For control and biosecurity information visit NSW WeedWise:**

[weeds.dpi.nsw.gov.au/weeds/partheniumweed](https://weeds.dpi.nsw.gov.au/weeds/partheniumweed)







#### Where are you likely to find it?

Parthenium weed has recently been found near Muswellbrook. It may also have spread into other locations in the Hunter region.

Look for it where:

- drought affected livestock have been fed grain or hay, particularly if it has come from Queensland.
- earthworks have taken place, particularly if machinery has been in Queensland.
- trucks or other vehicles pull over on roadsides with bare soil.

Check regularly and especially after rain.

#### What does it look like?

It is fast-growing and usually grows up to 1.5 m tall but can be up to 2 m tall.

**Leaves** are pale green and covered in soft fine hairs. Lower leaves are 5–20 cm long and deeply divided. Upper leaves are smaller and less divided.

**Flowers** are creamy white, 4–6 mm across and star-like with 5 distinct points. Flower clusters are delicate and look a bit like "baby's breath".

**Stems** are grooved, woody when older, and have many branches when flowering.

**Seen it? Call us:**

**Upper Hunter Weeds Authority** [0408 683 490](tel:0408683490)

**NSW DPI Biosecurity Helpline** [1800 680 244](tel:1800680244)

**Help protect our health and environment.**

**For control and biosecurity information visit NSW WeedWise:**

[weeds.dpi.nsw.gov.au/weeds/partheniumweed](https://weeds.dpi.nsw.gov.au/weeds/partheniumweed)

